



# TYRE PATTERN GUIDE

2017/2018

Radial OTR | Construction | Forklift | Agricultural



## Radial OTR



**5** MS202



**6** MS301



**7** MS302



**8** MS303



**9** MS401



**10** MS402



**11** MS405



**12** MS501



**13** MS502



**14** MSV01

## Construction



**17** MS901



**18** MS902



**19** MS903



**20** MS904



**21** MS905



**22** MS906



**23** MS909

# 18 TYRE RANGE

## Forklift



25

MS701



26

MS701 *Wheel Assemblies*



27

MS801

## Agricultural



29

MS961R

## Technical Tyre Information PAGE 30



**MAXAM**  
ENGINEERED IN EUROPE



# Radial OTR

Maxam OTR tyres are produced to the highest standards, using the latest manufacturing techniques and technologies.

Engineered to endure the toughest conditions, Maxam OTR tyres have a reputation of superior quality, innovative tread design and advanced compound construction.

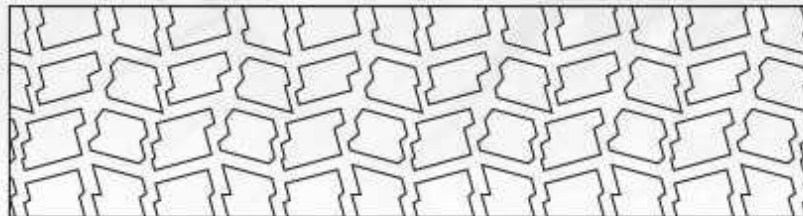






# MS202

## E2/G2/L2



**The MS202's aggressive self-cleaning tread design provides excellent traction in tough and demanding OTR applications.**

- Wear and cut resistant tread compound.
- Self-cleaning tread.
- Superior winter traction.
- Suitable for loaders and articulated dumpers.
- Excellent traction and flotation.
- Low vibration and excellent stability.

SIZE	PATTERN	TRA CODE	LOAD INDEX AND SPEED SYMBOL	STAR RATING	TYPE	RECOMMENDED RIM (in)	TREAD DEPTH (mm)	SECTION WIDTH (mm)	OVERALL DIAMETER (mm)
14.00 R24	MS202	E2/G2/L2	157B/153A8/175A2	*	TL	10.00VA	23	388	1360

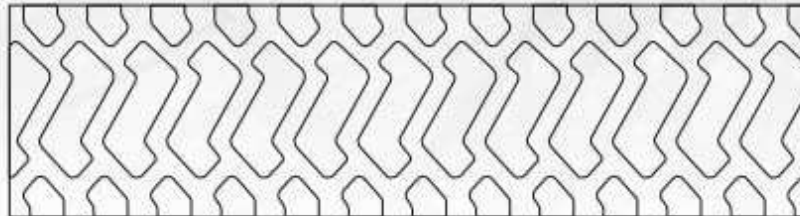
**SNOWXTRA**

**MUDXTRA**



# MS301

## E3/G3/L3



**Engineered for articulated dump trucks, graders and loaders, the MS301 provides excellent operator comfort and superb traction.**

- Wear and cut resistant tread compound.
- Self-cleaning tread.
- Superior traction.
- Suitable for loaders and articulated dumpers.
- Excellent traction and flotation.
- Low vibration and excellent stability.

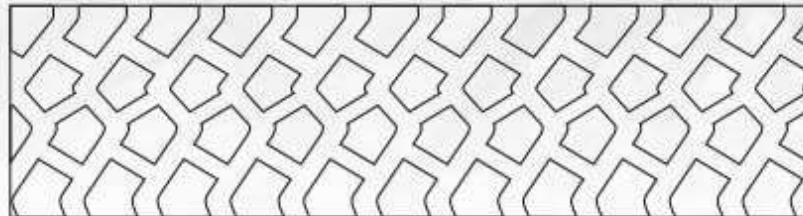
SIZE	PATTERN	TRA CODE	LOAD INDEX AND SPEED SYMBOL	STAR RATING	TYPE	RECOMMENDED RIM (in)	TREAD DEPTH (mm)	SECTION WIDTH (mm)	OVERALL DIAMETER (mm)
17.5 R25	MS301	E3/G3/L3	167B / 153A8 / 182A2	**	TL	14.00/1.5	28	449	1339
20.5 R25	MS301	E3/G3/L3	177B / 161A8 / 193A2	**	TL	17.00/2.0	30	517	1499
23.5 R25	MS301	E3/G3/L3	185B / 170A8 / 201A2	**	TL	19.50/2.5	33	608	1611
26.5 R25	MS301	E3/G3/L3	193B / 209A2	**	TL	22.00/3.0	36	679	1748
29.5 R25	MS301	E3/G3/L3	200B / 216A2	**	TL	25.00/3.5	39	763	1886





# MS302

## E3/G3/L3



The MS302 boasts an advanced tread compound which ensures prolonged tread life and optimal durability.

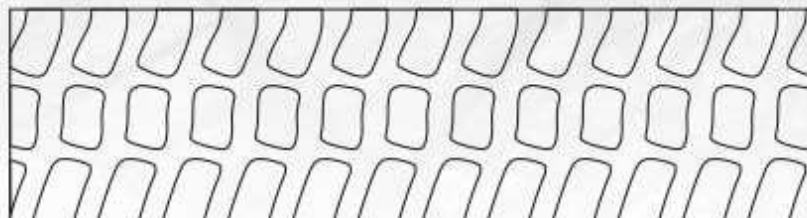
- Wear and cut resistant tread compound.
- Self-cleaning tread.
- Low rolling resistance.
- Prolonged tyre life.
- Excellent traction.

SIZE	PATTERN	TRA CODE	LOAD INDEX AND SPEED SYMBOL	STAR RATING	TYPE	RECOMMENDED RIM (in)	TREAD DEPTH (mm)	SECTION WIDTH (mm)	OVERALL DIAMETER (mm)
29.5 R25	MS302	E3/G3/L3	200B / 216A2	**	TL	25.00/3.5	43	763	1893



# MS303

**E3**



**Ideal for road scraper applications, the MS303 boasts outstanding durability to endure the harsh conditions of the road scraper application. Reduced vibration and excellent stability also ensure excellent operator comfort.**

- Minimal wheel spin and excellent traction.
- Excellent resistance to damage.
- Excellent operator comfort.
- Self-cleaning tread.
- Low road noise and minimal vibration.

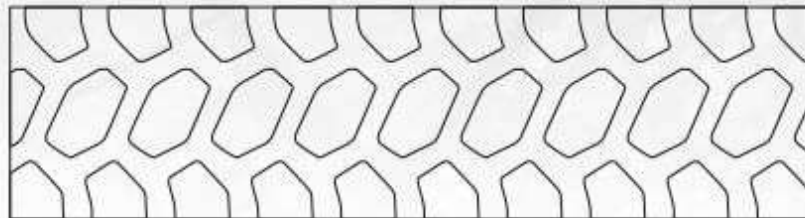
SIZE	PATTERN	TRA CODE	LOAD INDEX AND SPEED SYMBOL	STAR RATING	TYPE	RECOMMENDED RIM (in)	TREAD DEPTH (mm)	SECTION WIDTH (mm)	OVERALL DIAMETER (mm)
33.25 R29	MS303	E3	209B	**	TL	27.00/3.5	44	859	2097





# MS401

## E4



**Ideal for dump truck applications, the MS401's E4 tread design ensures excellent self-cleaning ability for optimal traction.**

- Minimal wheel spin and excellent traction.
- Optimal durability for prolonged tyre life.
- Excellent operator comfort.
- Self-cleaning tread.
- Low road noise and minimal vibration.

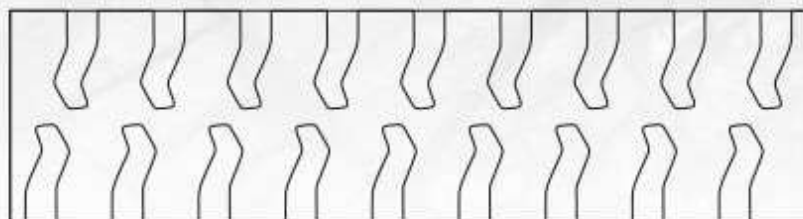
SIZE	PATTERN	TRA CODE	LOAD INDEX AND SPEED SYMBOL	STAR RATING	TYPE	RECOMMENDED RIM (in)	TREAD DEPTH (mm)	SECTION WIDTH (mm)	OVERALL DIAMETER (mm)
24.00 R35	MS401	E4	209B	**	TL	17.00/3.5	66	666	2170





# MS402

## E4



**The MS402's self-cleaning deep E4 tread design provides excellent wear resistance in tough, rigid dump truck applications.**

- Minimal wheel spin and improved traction.
- Excellent resistance to damage and cuts.
- Optimal durability for prolonged tyre life.
- Excellent operator comfort.
- Self-cleaning tread.
- Low road noise and minimal vibration.

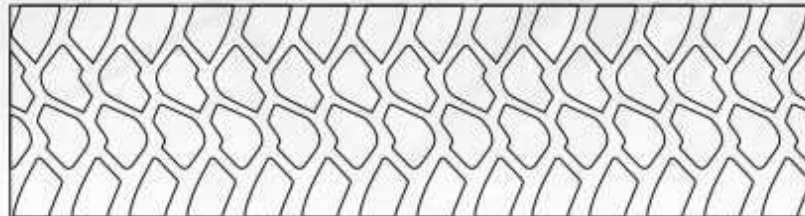
SIZE	PATTERN	TRA CODE	LOAD INDEX AND SPEED SYMBOL	STAR RATING	TYPE	RECOMMENDED RIM (in)	TREAD DEPTH (mm)	SECTION WIDTH (mm)	OVERALL DIAMETER (mm)
24.00 R35	MS402	E4	209B	**	TL	17.00/3.5	57	705	2196





# MS405

## E4/G4/L4



The MS405's aggressive, self-cleaning E4/G4/L4 tread design provides high traction and durability in tough, demanding applications.

- Wear and cut resistant tread compound.
- Long life non-directional deep tread design.
- Superior durability and reduced cost per hour.
- Suitable for loaders and articulated dumpers.
- Excellent flotation characteristics.
- Minimal vibration and excellent stability.

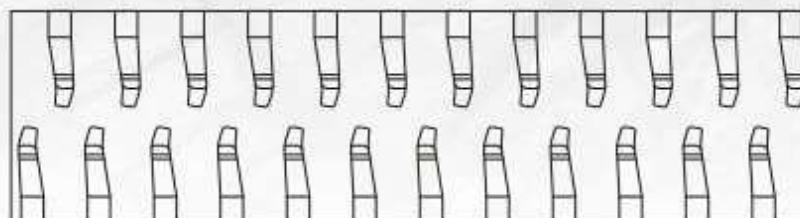
SIZE	PATTERN	TRA CODE	LOAD INDEX AND SPEED SYMBOL	STAR RATING	TYPE	RECOMMENDED RIM (in)	TREAD DEPTH (mm)	SECTION WIDTH (mm)	OVERALL DIAMETER (mm)
23.5 R25	MS405	E4/G4/L4	185B / 170A8 / 201A2	**	TL	19.50/2.5	52	603	1655
29.5 R25	MS405	E4/G4/L4	200B / 216A2	**	TL	25.00/3.5	60	763	1908





# MS501

## L5



**The MS501's extra deep L5 tread design provides excellent traction in tough underground mine applications.**

- Wear and cut resistant tread compound.
- Extra deep L5 traction pattern.
- Optimal durability for prolonged tyre life.
- Excellent traction and flotation.
- Minimal vibration and excellent stability.

SIZE	PATTERN	TRA CODE	LOAD INDEX AND SPEED SYMBOL	STAR RATING	TYPE	RECOMMENDED RIM (in)	TREAD DEPTH (mm)	SECTION WIDTH (mm)	OVERALL DIAMETER (mm)
23.5 R25	MS501	L5	201A2	**	TL	19.50/2.5	78	605	1665
29.5 R29	MS501	L5	218A2	**	TL	25.00/3.5	99	800	2010

**MINE<sup>EXTRA</sup>**



# MS502

## L5S



The MS502's extra deep smooth L5S tread design provides maximum wear resistance in the most demanding applications.

- Wear and cut resistant tread compound.
- Especially suitable for mining and waste handling operations.
- Prolonged tyre life.
- Excellent traction and flotation characteristics.
- Minimal vibration and excellent stability.

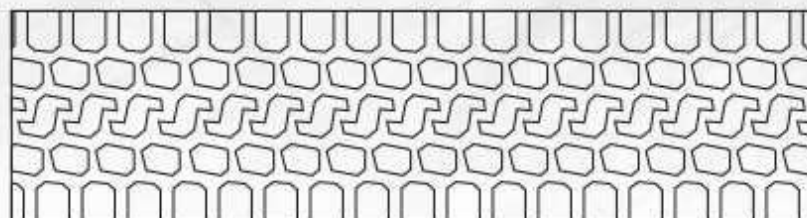
SIZE	PATTERN	TRA CODE	LOAD INDEX AND SPEED SYMBOL	STAR RATING	TYPE	RECOMMENDED RIM (in)	TREAD DEPTH (mm)	SECTION WIDTH (mm)	OVERALL DIAMETER (mm)
29.5 R29	MS502	L5S	218A2	**	TL	25.00/3.5	102	800	2010





# MSV01

## HIGHWAY SERVICE



Developed for highway service cranes, the MSV01 is an excellent combination of ride comfort, durability and traction.

- Minimal wheel spin and excellent traction.
- Excellent resistance to cuts and damage.
- Suitable for on and off-road use.
- Excellent operator comfort.
- Self-cleaning tread.
- Low road noise and minimal vibration.

SIZE	PATTERN	TRA CODE	LOAD INDEX AND SPEED SYMBOL	STAR RATING	TYPE	RECOMMENDED RIM (in)	TREAD DEPTH (mm)	SECTION WIDTH (mm)	OVERALL DIAMETER (mm)
16.00 R25 (445/95R25)	MSV01	HIGHWAY SERVICE	174F	-	TL	11.00/1.7 CR 11.25/2.0	27	465	1500
20.5 R25 (525/80R25)	MSV01	HIGHWAY SERVICE	177F	-	TL	17.00/1.7 CR 17.00/2.0	30	516	1504







# Construction

Developed with the increasing demands of the construction industry foremost in mind, the Maxam construction tyre range is an exceptional combination of durability, stability and operator comfort.

These days, downtime caused by flat and damaged tyres is too costly to encounter. Turn to Maxam construction tyres for assurance of durability and ultimate peace of mind.

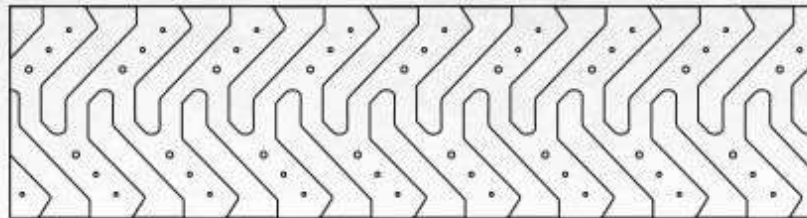






# MS901

## BACKHOE INDUSTRIAL SERVICE



**The MS901's aggressive, self-cleaning, flat tread contour provides high traction, excellent stability and optimal durability in tough and demanding applications.**

- Excellent grip.
- Wear and cut resistant tread compound.
- Specially designed domed mud breakers for optimum self-cleaning.
- Minimal vibration and excellent stability.
- Protected sidewall for increased cut resistance.

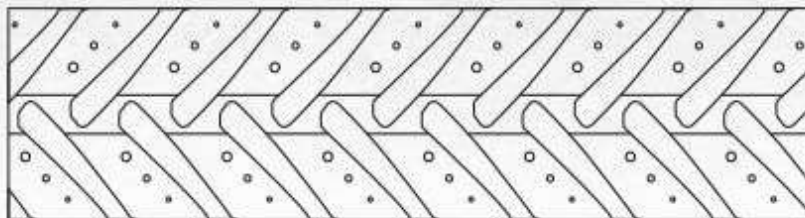
SIZE	PATTERN	PLY RATING	TYPE	LOAD INDEX AND SPEED RATING	RECOMMENDED RIM (in)	TREAD DEPTH (mm)	SECTION WIDTH (mm)	OVERALL DIAMETER (mm)
12.5/80-18	MS901	12	TL	143A8	11.00	26	310	985





# MS902

## BACKHOE INDUSTRIAL SERVICE



**Excellent for backhoes, small telehandlers and wheeled excavators, the MS902 offers excellent durability and puncture resistance.**

- Excellent grip.
- Wear and cut resistant tread compound.
- Specially designed domed mud breakers for optimum self-cleaning.
- Minimal vibration & excellent stability.
- Protected sidewall for increased cut resistance.

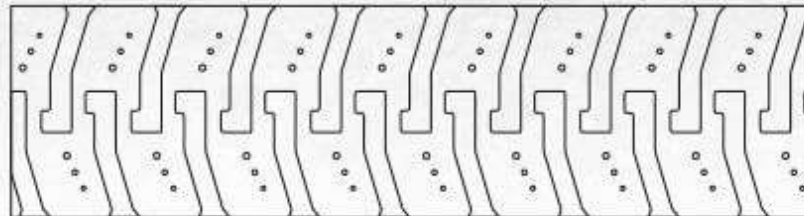
SIZE	PATTERN	PLY RATING	TYPE	LOAD INDEX AND SPEED RATING	RECOMMENDED RIM (in)	TREAD DEPTH (mm)	SECTION WIDTH (mm)	OVERALL DIAMETER (mm)
15.5/80-24	MS902	16	TL	159A8	13.00	28	394	1270





# MS903

## BACKHOE INDUSTRIAL SERVICE



**The MS903's aggressive, self-cleaning, flat tread design ensures high traction, excellent stability and durability in tough and demanding applications.**

- Excellent grip.
- Wear and cut resistant tread compound.
- Specially designed domed mud breakers for optimum self-cleaning.
- Minimal vibration and excellent stability.
- Advanced tread design for excellent puncture resistance.
- Protected sidewall for increased cut resistance.

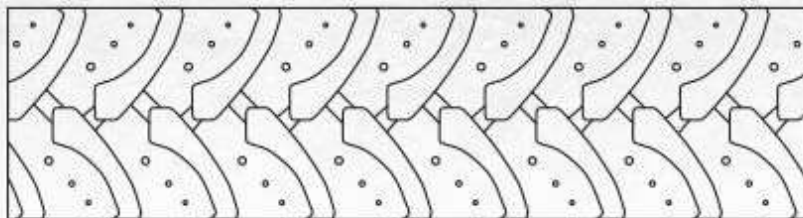
SIZE	PATTERN	PLY RATING	TYPE	LOAD INDEX AND SPEED RATING	RECOMMENDED RIM (in)	TREAD DEPTH (mm)	SECTION WIDTH (mm)	OVERALL DIAMETER (mm)
16.9-28	MS903	14	TL	155A8	W15L	27.5	438	1409





# MS904

## BACKHOE INDUSTRIAL SERVICE



**Ideal for backhoes and telehandlers, the MS904 ensures excellent puncture resistance and stability.**

- Excellent grip.
- Wear and cut resistant tread compound.
- Specially designed domed mud breakers for optimum self-cleaning.
- Minimal vibration and excellent stability.
- Protected sidewall for increased cut resistance.

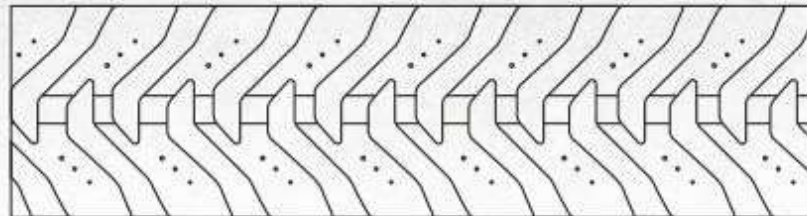
SIZE	PATTERN	PLY RATING	TYPE	LOAD INDEX AND SPEED RATING	RECOMMENDED RIM (in)	TREAD DEPTH (mm)	SECTION WIDTH (mm)	OVERALL DIAMETER (mm)
17.5L-24	MS904	16	TL	156A8	W15L	26.5	445	1241





# MS905

## GRADER



A dedicated grader tyre boasting excellent puncture resistance, the MS905 is an expert combination of durability and stability.

- Wear and cut resistant tread compound ensures prolonged tyre life and minimal downtime.
- Specially designed domed mud breakers for optimal self-cleaning ability and enhanced traction.
- Minimal vibration and excellent stability.
- Protected sidewall for increased cut resistance.

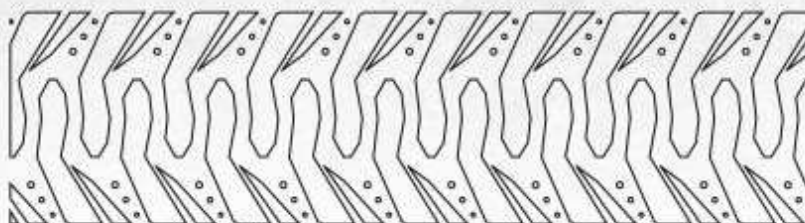
SIZE	PATTERN	PLY RATING	TYPE	LOAD INDEX AND SPEED RATING	RECOMMENDED RIM (in)	TREAD DEPTH (mm)	SECTION WIDTH (mm)	OVERALL DIAMETER (mm)
13.00-24	MS905	12	TL	143A8	8.00TG	25	349	1276
14.00-24	MS905	12	TL	147A8	8.00TG	25	368	1346





# MS906

## SKID STEER



**Designed for general skidsteer applications such as bobcats and small boom lifts, the MS906 is an excellent choice for operators wanting durability and reliability.**

- Wear and cut resistant tread compound.
- Self-cleaning, stepped tread.
- Minimal vibration and excellent stability.
- Full-flat profile and advanced tread design ensure excellent traction.
- Reinforced shoulder, sidewall and bead for enhanced stability.
- Deep tread design for prolonged tyre life.

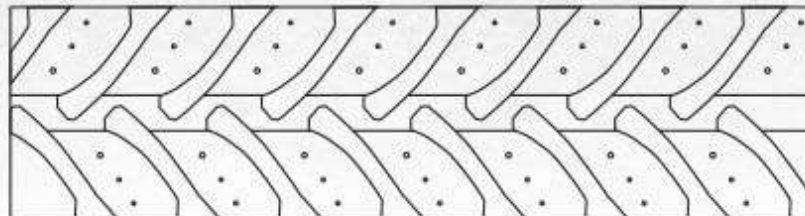
SIZE	PATTERN	PLY RATING	TYPE	LOAD INDEX AND SPEED RATING	RECOMMENDED RIM (in)	TREAD DEPTH (mm)	SECTION WIDTH (mm)	OVERALL DIAMETER (mm)
10-16.5	MS906	10	TL	—	8.25	16	271	768
12-16.5	MS906	12	TL	—	9.75	20	331	834
14-17.5	MS906	14	TL	—	10.50	26	360	920





# MS909

## MPT



The multi-purpose MS909 has an aggressive, self-cleaning tread design which ensures excellent traction and durability in a large range of demanding construction applications and work sites.

- Wear & cut resistant tread compound.
- Specially designed domed mud breakers for enhanced self-cleaning.
- Excellent grip and increased traction.
- Deep tread design for increased tyre life.
- Protected sidewall for increased cut resistance.

SIZE	PATTERN	PLY RATING	TYPE	LOAD INDEX AND SPEED RATING	RECOMMENDED RIM (in)	TREAD DEPTH (mm)	SECTION WIDTH (mm)	OVERALL DIAMETER (mm)
405/70-24	MS909	14	TL	151A8	13.00	33	405	1175



# Forklift

Maxam forklift tyres are engineered with years of experience, ensuring the very latest in design and compound construction.

Warehouse managers cannot afford to have a forklift out of action for a prolonged period of time, hence the durable Maxam tyres offer an excellent solution and ensure peace of mind.

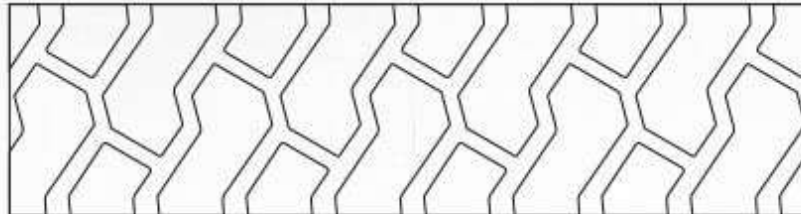






# MS701

## SOLID TYRES - INDUSTRIAL PRO



The Maxam MS701 is a premium, three compound solid resilient tyre that incorporates a full-sized wide and flat profile, reinforced shoulder and multi-layer construction for prolonged tyre life and enhanced durability.

- Three compound construction.
- Wear and cut resistant tread compound.
- Smooth running.
- Low rolling resistance.
- Heat resistant tread compound.

SIZE	PATTERN	RECOMMENDED RIM (in)	TREAD DEPTH (mm)	SECTION WIDTH (mm)	OVERALL DIAMETER (mm)
5.00-8	MS701	3.00D	20	122	450
6.00-9	MS701	4.00E	24	138	523
6.50-10	MS701	5.00F	30	162	566
7.00-12	MS701	5.00S	30	172	652
28x9-15	MS701	7.00	30	218	687
8.25-15	MS701	6.50	35	212	813





**CUT OUT THE FUSS.  
MULTIPLY THE  
EFFICIENCY!**

Premium Solid Forklift  
Tyre & Rim Assemblies  
**READY TO FIT!**

**MS701**

## SOLID WHEEL ASSEMBLIES



The ultimate efficiency promoter for any warehouse manager! Premium Maxam MS701 forklift tyres already fitted to rims.

An Incredible size and rim pattern line up which caters to many forklifts, including models for Komatsu, Toyota, Mitsubishi, Nissan, Tallift, Hyster, TCM and more!

- No solid tyre pressing.
- No service charges.
- No call-out fees.
- Zero down time.
- Certified Product.
- Control YOUR own service program!

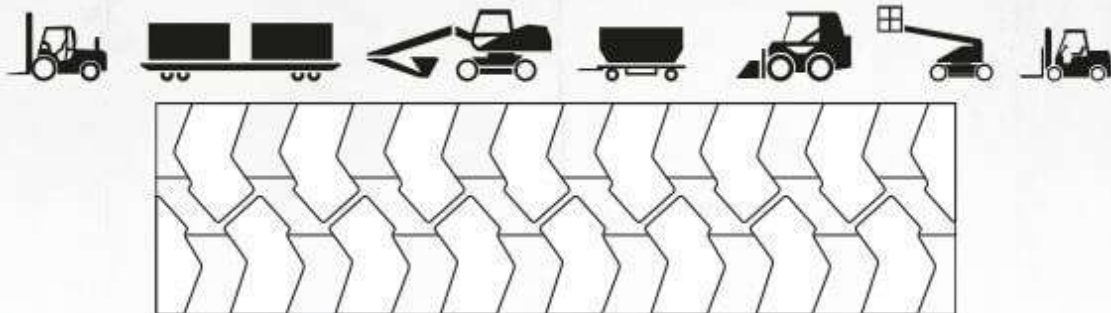
SIZE	PATTERN	RIM SIZE	TOM	CENTRE HOLE	STUD No.	BRANDS
5.00-8	MS701 SWA	3.00Dx8DT	FD 1.5	110	6	Komatsu, Toyota, Mitsubishi, Nissan & Tallift
5.00-8	MS701 SWA	3.00Dx8DT	FD 2.5	100	6	TCM, Nichiyu, Hyster, Yale, Shinko & Sumitomo
6.00-9	MS701 SWA	4.00Ex9DT	FD 2.5	150	6	Komatsu, Toyota, Mitsubishi, Nissan, Tallift & Shinko
6.00-9	MS701 SWA	4.00Ex9DT	FD 2.5	130	8	TCM
6.50-10	MS701 SWA	5.00Fx10DT	FD 1.5/3.0	150	6	Komatsu, Toyota, Mitsubishi, Nissan, Tallift & Shinko
6.50-10	MS701 SWA	5.00Fx10DT	FD 3.0	130	8	TCM
7.00-12	MS701 SWA	5.00Sx12DT	FD 2.5/4.0	145	8	Toyota, Tallift & Shinko
7.00-12	MS701 SWA	5.00Sx12DT	FD 2.5	170	6	Nissan, Yale & Hyster
7.00-12	MS701 SWA	5.00Sx12DT	FD 2.5	150	6	TCM
7.00-12	MS701 SWA	5.00Sx12DT	FD 2.5/4.0	170	6	Komatsu & Mitsubishi
7.00-12	MS701 SWA	5.00Sx12DT	FD 3.5/4.0	175	5	TCM & Nichiyu

All information is provided as a guide only. Fitments for different machines of the same brand may vary. Consult the forklift manufacturer for accurate details on rim and tyre fitments.



# MS801

## BIAS TIRES - INDUSTRIAL PNEUMATICS



**Premium pneumatic forklift tyre designed to be versatile - the MS801 will suit a variety of machinery from airport dolly machines to large forklifts, and ensures excellent durability and puncture resistance.**

- Wear and cut resistant tread compound.
- Minimal vibration and excellent stability.
- Full-flat tread profile ensures excellent traction and even tread wear for prolonged tread life.
- Reinforced shoulder, sidewall and bead for enhanced stability.

SIZE	PATTERN	PLY RATING	TYPE	RECOMMENDED RIM (in)	TREAD DEPTH (mm)	SECTION WIDTH (mm)	OVERALL DIAMETER (mm)
5.00-8	MS801	10	TT	3.00D	14	136	468
6.00-9	MS801	12	TT	4.00E	16	166	546
6.50-10	MS801	12	TT	5.00	17	179	595
7.00-12	MS801	12	TT	5.00	17	196	678
8.15-15 (28x9-15)	MS801	14	TT	7.00	18	220	708
8.25-15	MS801	14	TT	6.50	19	245	848



# Agricultural

Maxam agricultural tyres are developed to the same un-compromised standards as the Maxam OTR and construction tyres. Developed with professionals and tested and proven in tough conditions, Maxam agricultural tyres have what it takes ... and more!

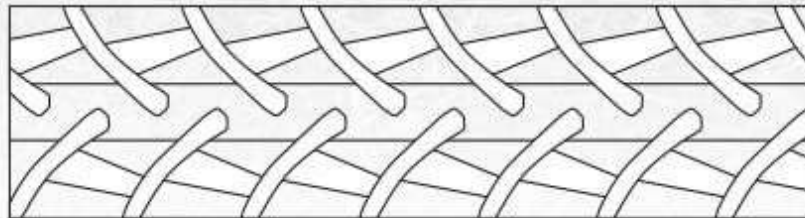






# MS951R

## AGRICULTURAL TYRE



**Engineered to the highest standards, the Maxam MS951R is the perfect solution for medium sized tractors needing quality and economical tyres.**

- Suitable for medium horsepower tractors.
- Balanced modern tread pattern and sidewall design for all-round performance.
- Proven construction ensures excellent durability and comfort.

SIZE	PATTERN	TYPE	LOAD INDEX AND SPEED RATING	RECOMMENDED RIM (in)	TREAD DEPTH (mm)	SECTION WIDTH (mm)	OVERALL DIAMETER (mm)
520/85 R42	MS951R	TL	157A8 / 157B	18.00	53	536	1951

**AGRIXTRA**



# Technical Tyre Information

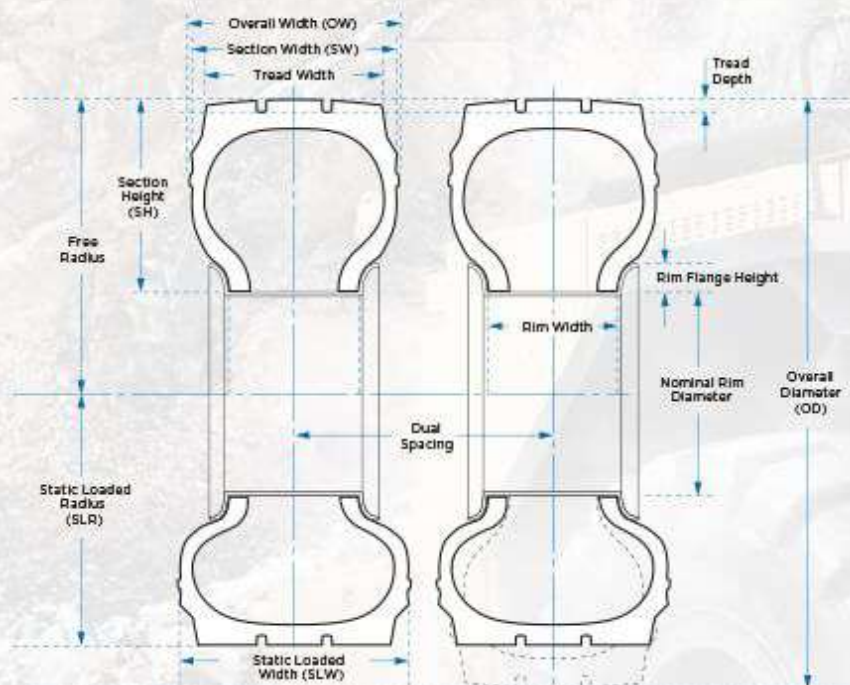
## Tyre Construction



## Sidewall Markings



## Tyre Dimensions



## Tread Depth TRA Classification



All information provided is intended as a guide only. For more specific information related to your tyres, consult your local tyre dealer.









**Radial OTR  
Construction  
Forklift  
Agricultural**



**TyreMAX**  
mark of quality - assurance of service

YOUR LOCAL MAXAM TYRE DEALER

**Limit of Liability and  
Disclaimer of Warranty:**

Tyremax Pty Ltd makes no representation or warranties with respect to the accuracy or completeness of the contents of this publication and specifically disclaims any implied warranties of merchantability or fitness for any particular purpose and shall in no event be liable for any loss of profit or any other commercial damage, including but not limited to special, incidental, consequential, or other damages.